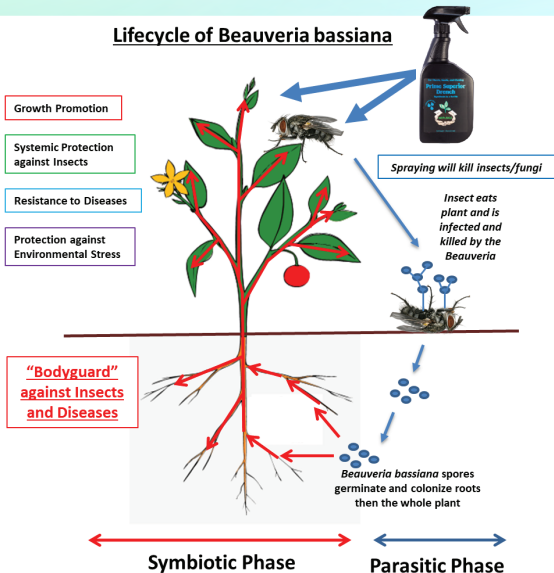


# WHY PRIME SUPERIOR IS THE BEST PRODUCT IN THE MARKET...

Prime Superior

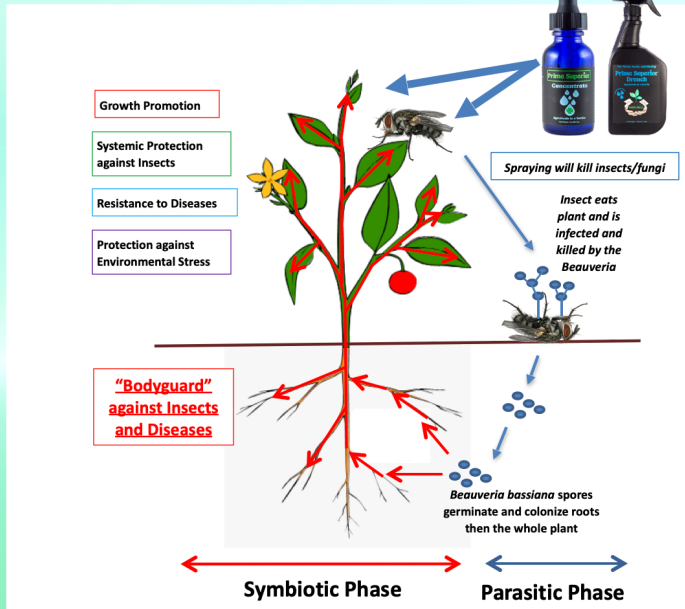
## Lifecycle of *Beauveria bassiana*



**YIELD**  
**QUALITY**  
**GERMINATION SPEED**  
**MORE TRICHOMES**  
**DROUGHT TOLERANCE**  
**ROOT MASS**  
**INCREASED PHOTOSYNTHESIS**  
**DISEASE RESISTANCE**  
**INSECT RESISTANCE**  
**MORE BIOCHEMICALS**  
**TOXIN LEVELS**  
**NUTRIENT UPTAKE**  
**NEMATODE RESISTANCE**  
**FLOODING TOLERANCE**

# LIFE-CYCLE OF BEAUVERIA BASSIANA...

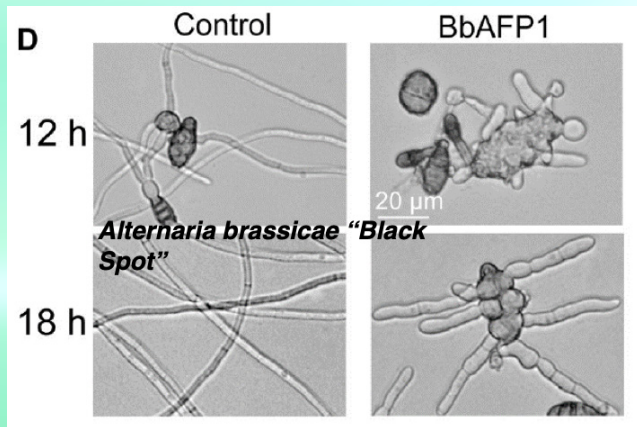
Prime Superior



# HOW BEAVERIA BASSIANA INCREASES DISEASE RESISTANCE

Prime Superior

## BBAFP1 KILLS FUNGAL CELLS



**BLACK SPOT OF CANOLA CAN CAUSE SUBSTANTIAL YIELD REDUCTIONS UP TO 36%.**

*Beauveria bassiana* is very effective at reducing diseases caused by fungi.

But how does this work?

Well, part of the answer has recently been provided by a multinational research group from the university of florida and southwest university in china.

The researchers found that a small protein from *beauveria bassiana*, that they called *bbafp1*, binds to the cells of other fungi and kills them.